



PLANT DISEASES PREVENTION APP

Agenda

01

How it all started

02

Challenge & Idea

03

Solution

04

Future Steps

05

Demo App

Our team



GENTI NUHIU

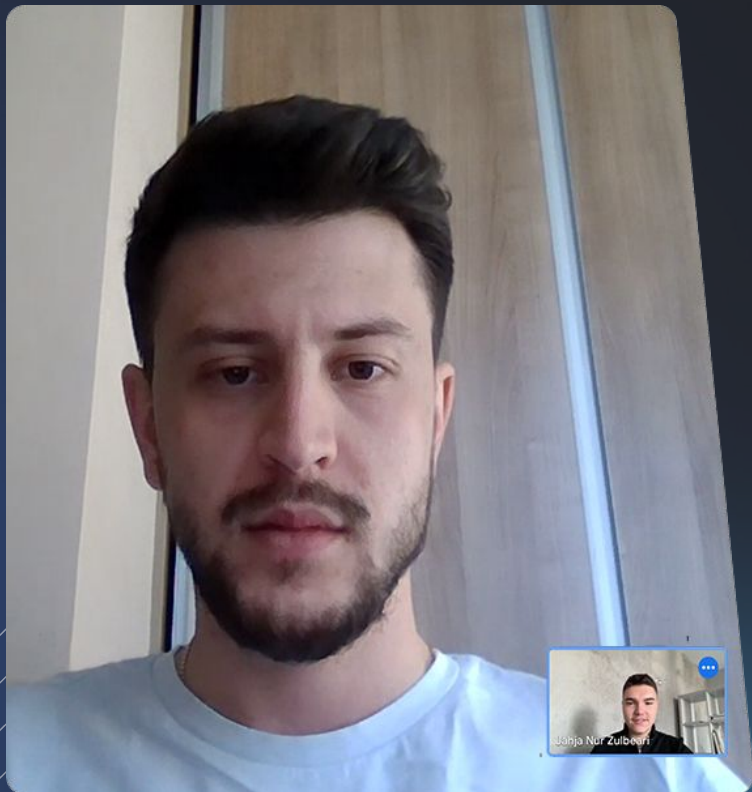


JAHJA-NUR ZULBEARI



VIGAN DEMIRI

HOW IT ALL STARTED



"Our country loses 35% of the annual crop yield due to plant diseases. Early detection of plant diseases remains difficult due to the lack of lab infrastructure and expertise."





PETAR STEFANOVSKI
MINISTRY OF AGRICULTURE





OUR IDEA

In order to prevent this phenomenon, we suggest a web application that will inform agronomists, future investors or large plantation owners about:

- The condition of the fields in a specific area
 - The disease of the plants
 - Symptoms
 - Contributing Factors
 - Prevention recommendations
 - Recommendations for suitable plantation to boost production
- 
- 

MAIN FUNCTIONS



Scanning

Farmers will scan the leaves of potential-diseased plants



Analysis

Analysis provides farmers with detailed insights into the plants conditions

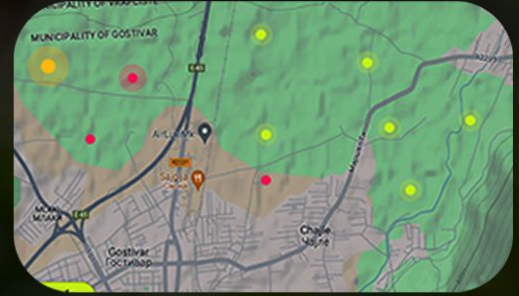



Centralized Map

It generates a centralized map that displays the geographical distribution.



**SYMPTOMS
FACTORS
PREVENTION
RECOMMENDATION**



 **AgriScan**



DEMO



FUTURE STEPS

Advanced Features: Innovate our application with advanced features and capabilities such as:

- Generative AI algorithms for a wide range of types of diseases and better accuracy.
- Integrating remote sensing technologies for crop monitoring, or developing predictive analytics for crop yield Forecasting using drones.



Thanks

